



CAPABILITY STATEMENT

Business Overview

E&E Waste is a domestic and commercial waste management company with over 30 years' experience in the industry. Starting in 1986 with a commercial front lift bin service we have grown to service both Toowoomba & Goondiwindi regional areas. We have held the domestic waste contract for Goondiwindi Regional Council since 2002, covering Talwood, Bungunya, Toobeah, Yelarbon, Inglewood, Texas and of course, Goondiwindi.

With depots in Goondiwindi & Toowoomba we provide a diverse range of services across both Regional Council Areas. At E&E we pride ourselves on providing the highest level of service and attention to detail.

Our core value, "service is our business" defines what we stand for.

E&E Waste can offer tailored made waste management solutions to provide customers with clear environmental, social and financial outcomes. By working in partnership with our customers we provide the confidence that our services are being managed in the most effective and sustainable way possible.



Our Staff

Our staff are a key resource and are integral to our ongoing success. We have a dedicated, service oriented team of core staff and management personnel.

We pride ourselves on having a multi skilled workforce that process a comprehensive range of skills. All of our drivers hold the necessary industry qualifications and undertake regular OHS training. When required we have a list of trusted contractors who can boost our capabilities at short notice.

At E&E Waste we promote equality and diversity ensuring our staff have the necessary expertise and experience and are a good fit with the values of our company.



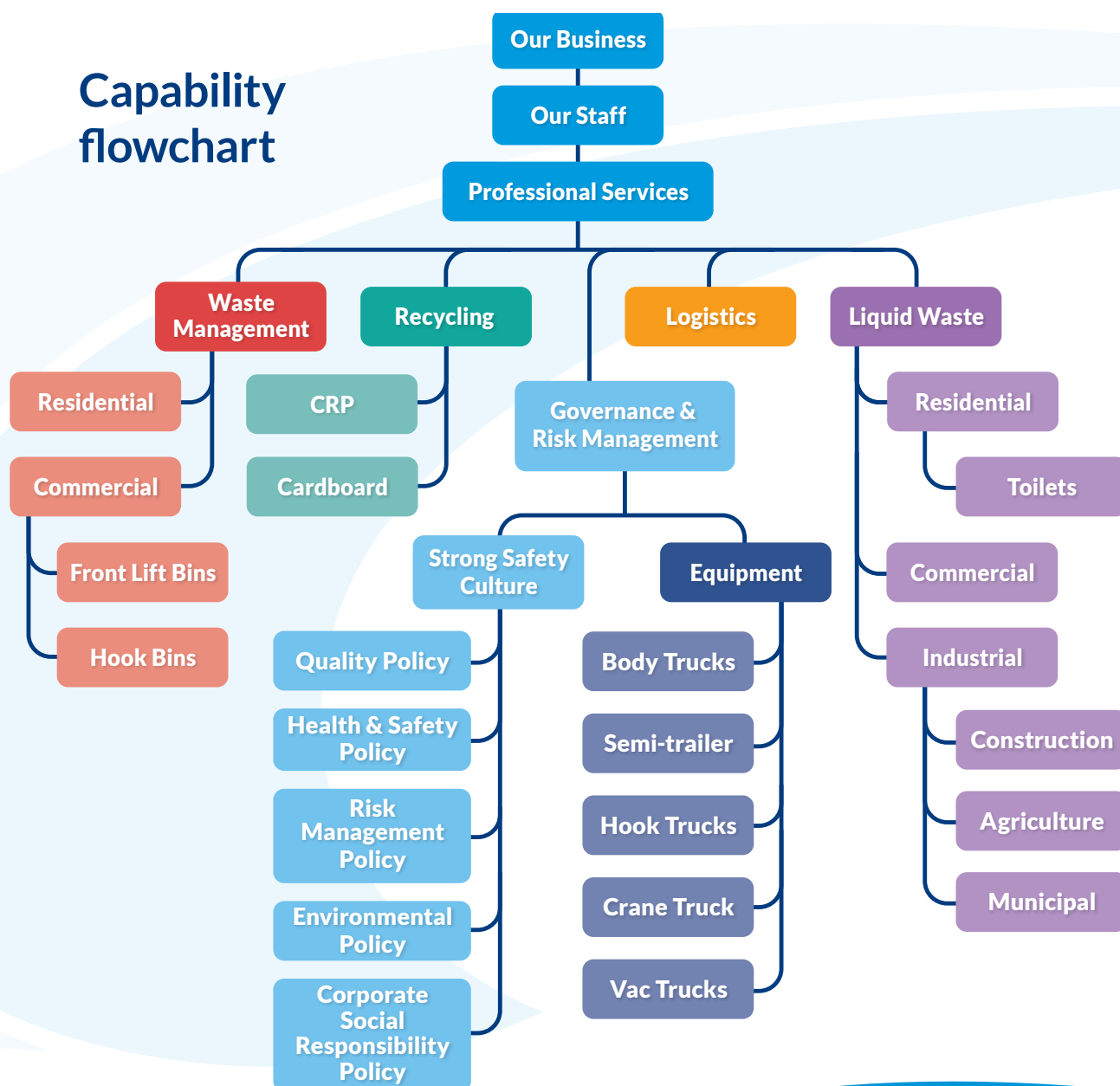


Professional Services

At E&E Waste we offer a range of professional waste management solutions. We have invested in a large fleet of well-maintained vehicles and equipment to ensure that E&E provides an efficient and reliable service. Our services include:

1. Waste management solutions
2. Recycling & resource recovery
3. Logistics
4. Liquid waste

Capability flowchart



Waste management solutions

E&E Waste can offer waste management solutions to a wide range of customers including residential, commercial and industrial.

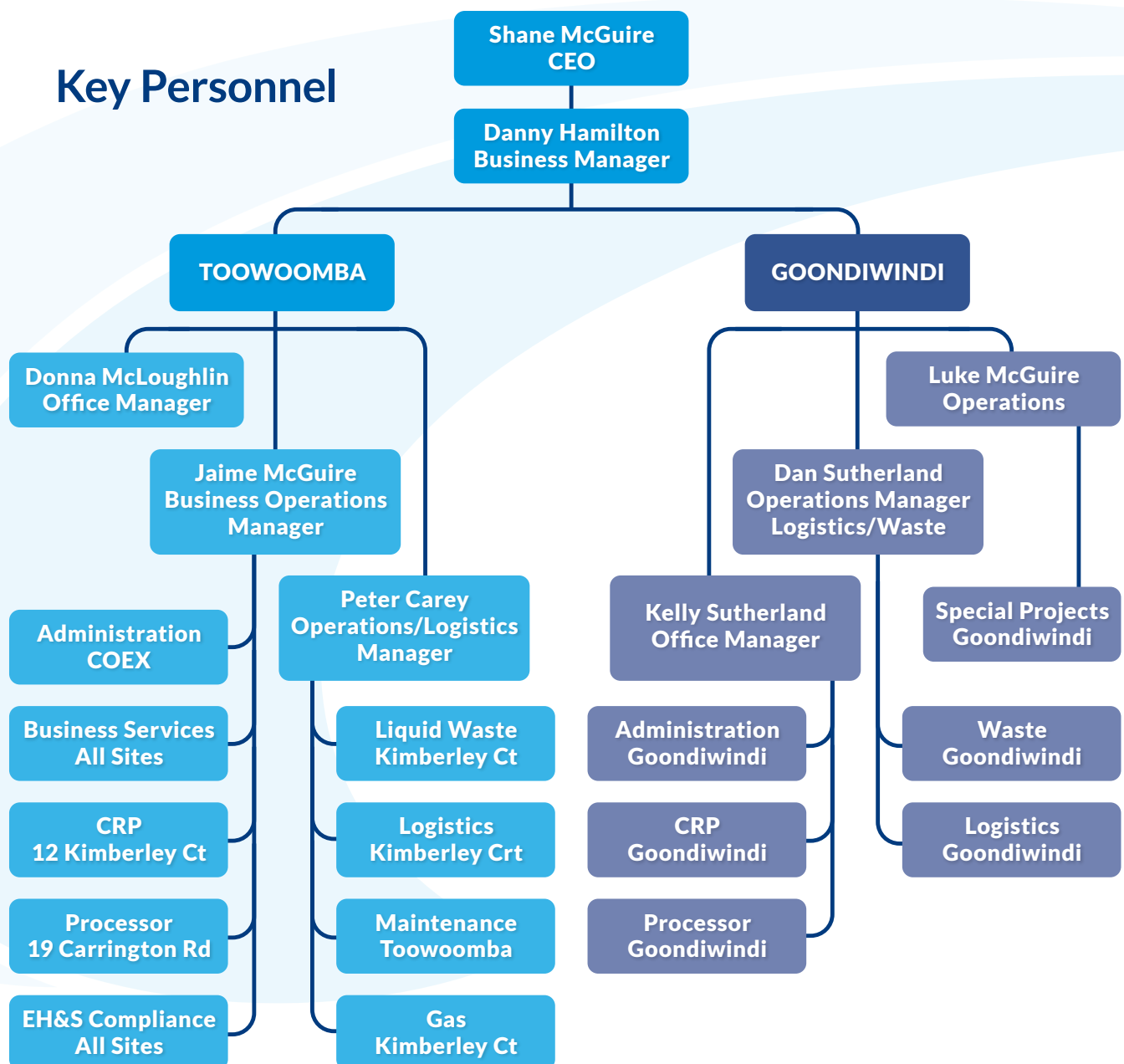
Front lift bin service

Ideal for light to medium density and small to large commercial & industrial quantities of waste. We supply various sized steel bins, depending on the need. Our front lift bins are designed for all types of commercial and domestic waste in volumes too large for wheelie bins. These all-metal industrial bins are constructed for E&E Waste in accordance with relevant Australian standards and guidelines, are painted and can be wheeled around easily. A standard range of bin sizes are available including 1.5 m³, 3 m³ & 4.5 m³.

Roll on & roll off hook bins

Hook bins are ideal for large waste producers of bulky waste. Designed for all types of industrial, commercial and domestic waste such as construction & building projects, farm waste, household clean ups, green waste and much more. These large bins have been manufactured to exacting standards with a capacity starting at 8 m³ (as an alternate to skip bins). Bin sizes range from 8 m³, 15 m³, 20 m³, 25 m³, 30 m³ and 35 m³.

Key Personnel



Skip bins

Toowoomba

E&E Waste use the smaller size hook bin at 8 m³ as an alternative solution to skip bins. These are ideal for commercial & domestic site clean ups and smaller construction projects.

Goondiwindi

E&E Waste have 3 m³, 5 m³, 6 m³ and 8 m³ skip bins available for commercial & domestic site clean ups and smaller construction projects.

Crane truck

E&E Waste has a body truck & dog trailer with hiab crane which operates out of Goondiwindi. This combination is ideal for moving a range of farm machinery & containers.

Liquid waste solutions

E&E Waste is epa licensed in the removal of most types of liquid waste including waste water and emergencies. We have all the facilities and equipment to deal with septic tanks, grease traps, sludge, waste water & emergencies.

E&E Waste have a fleet of liquid waste vacuum tankers with powerful industrial vacuum pumps, in various capacities from 7,000 to 26,000 litre capacity. There are a large range of liquid waste jobs we can handle, including:

Domestic

Domestic services include septic tanks, grease traps, polluted water and untreated swimming pools.

Commercial & industrial

Commercial & industrial services include septic tanks, drain cleaning and unblocking and contaminated water & effluent.



Hospitality

Hospitality services include portable toilets, toilet blocks and grease traps.

Construction

Construction services include settling ponds, sediment tanks, excavation & driller's mud, temporary toilet blocks, concrete slurry, footings, trenches and piling operations.

Agriculture

Agriculture services include effluent ponds, settling ponds, emptying silos, emptying dams and channels.

Municipal & government authorities

We offer a diverse range of services including emergency services, flooding relief, drain/culvert/water course repair & maintenance, wash bays and silt traps.

Emergency response

E&E Waste has significant experience and capabilities in the cleanup and management of liquid waste. We provide a 24 hour callout service for key customers.

Portable toilets

E&E Waste has a large quantity of portable toilets that can be hired on a long or short term basis and fully serviced including emptying, cleaning and restocked with paper rolls & towels at intervals that suit the customer.

These toilets are integrated into a durable trailer that can be installed in single or multiple units on industrial sites, building sites, events or private residences.

Resource recovery

E&E Waste can manage the recovery, collection and transport of resources such as paper, cardboard, timber and scrap metals.



Cardboard

As part of our waste management solution we are able to arrange the collection of cardboard with our front lift bins.

Timber

E&E Waste is able to collect large quantities of timber including offcuts and pallets via our hook bin service.

Scrap metal

E&E Waste is able to provide either hook bins and/or front lift bins as part of our overall waste management solution.

Containers for Change

Collection refund point

E&E Waste (Return'em for Cash) has a container refund point (CRP) at Toowoomba and Goondiwindi for the collection of drink containers under the container refund scheme (COEX). We are able to provide wheelie bins and/or wool packs for the collection of these items.

As part of our commitment to the local community we have allocated over 290 wheelie bins to 84 schools & community groups. We collect from these groups on a regular basis and provide assistance on setting up their programs.

Type	Number	Bins
Schools	37	160
Charities	14	32
Aged Care	2	14
Clubs	33	98
Hotels	7	24
Businesses	25	85
Individuals	14	14
Totals	132	427

E&E Waste's refund point in Toowoomba is the largest in the Darling Downs & South West Region with over 2.5 Million containers collected every month. As part of Covid-19 we have instigated a collection service across the Darling Downs & Goondiwindi. This service is currently using google forms to collect minimal information for collection with plans to move to a Smartphone App in the near future – Go to: www.eewaste.com.au/pickup

Processing

E&E Waste has the coex processing contract for the Darling Downs & south west. As part of this contract we process aluminum cans, polyethylene terephthalate (PET) bottles, liquid paperboard (LPB), high-density polyethylene (HDPE) bottles and glass bottles.

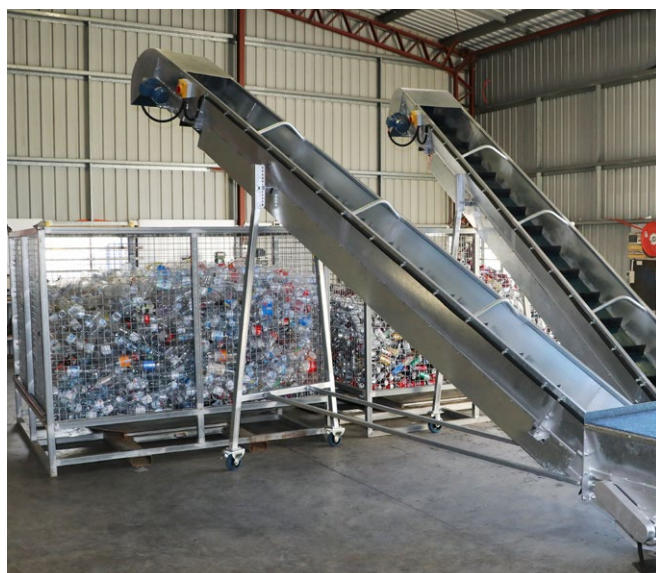
Logistics

E&E Waste has the coex contract for logistics in the Darling Downs and South West Queensland. Our vehicles service 16 CRPs from Stanthorpe in the south, Thargomindah in the west and Augathella in the north west.

Logistics

E&E Waste has a number of heavy vehicles used in our waste management services. These include:

- Three Hook Trucks
- Semi-Trailer
- 26,000 Lt Liquid Waste Tanker
- Two Vacuum Trucks
- Two Body Trucks
- Six Mercedes Sprinter Vans
- Two Front Lift Trucks
- Two Side Lift Trucks



**Return'em
for
CASH**



Governance and risk

E&E Waste has a Health Safety & Environmental (HSE) management system that has been developed in accordance with:

- ISO9001:2015 Quality Management Systems;
- ISO14001:2015 Environmental Management Systems;
- AS 4801:2001 Occupational Health & Safety Management Systems.

E&E Waste also documents procedures and processes to ensure the safety of our employees, sub-contractors, customers and other stakeholders.

Health Safety and Environment

The IMS consists of the following levels of documented information:

- Policies: policies are documents that demonstrate the overall commitment to improving quality performance and are authorised by the senior management team
- System procedures: high-level procedures that define the activities that are to be fulfilled to ensure that the IMS complies with standards
- Module workflows, standard operating procedures (SOPS). Control and operational procedures:
 - » Meet customers' requirements;
 - » Provide supplementary guidance and instructions to support the intent of the IMS and;



» Ensure that the requirements of the ims will be adequately addressed within the organisation.

- Forms, registers and records are evidence to prove the ims is operational.

Policies

E&E Waste's policy statements are listed below. These documents are presented on the company website:

- POL001_Quality Policy
- POL002_Health and Safety Policy
- POL003_Risk Management Policy
- POL004_Environmental Policy
- POL005_Equal Employment Opportunity Policy
- POL006_Chain of Responsibility Policy
- POL007_Return to Work & Rehabilitation Policy
- POL008_Trade Practices Policy
- POL009_Fitness for Work Policy
- POL010_Code of Conduct Policy
- POL011_Corporate Social Responsibility Policy
- POL012_Privacy Policy